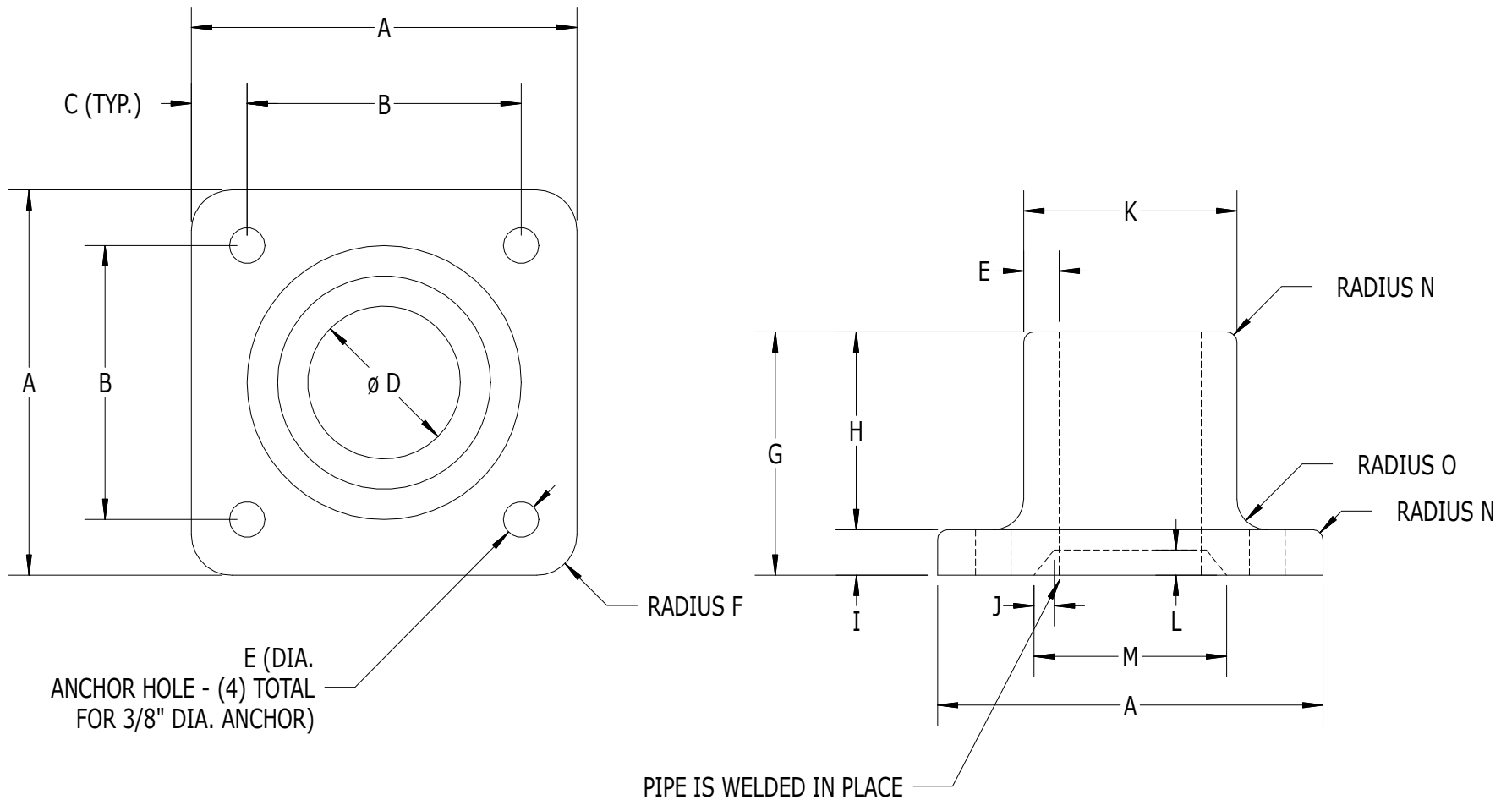


SCALE: 1/2



E (DIA.
ANCHOR HOLE - (4) TOTAL
FOR 3/8" DIA. ANCHOR)

PIPE IS WELDED IN PLACE

CAN BE USED ON ANGLES FROM 0-9 DEGREES

#541 - SERIES 500 HEAVY DUTY BASE

LABEL	A	B	C	D	E	F	G	H	I	J	K	L	M	N	O
DIMENSION	4-3/4"	3-3/8"	11/16"	1.880"	7/16"	1/2"	3"	2-7/16"	9/16"	1/4"	2-5/8"	5/16"	2-3/8"	1/8"	3/8"

